



European Economics and Finance Society
Eleventh Annual Conference
Koç University, Istanbul,
14th-17th June 2012

Conference Program

Thursday 14 June 2012

17.00 – 18.00 Registration

18.00 – 20.00 Welcome Reception

Welcome by
Professor Barış Tan
Dean of the College of Administrative Sciences and Economics (CASE), Koç University

Venue: Founders Hall, Koç University
(Please see maps at the appendix of the program)

Friday 15 June 2012 · 9:30 – 11:15 | Parallel Sessions 1

Conference Venue: Koç University (Please see maps at the appendix of the program)

	Room A (CASE B33)	Room B (CASE B34)	Room C (CASE B35)	Room D (CASE B38)	Room E (CASE B39)
9 : 3 0 – 1 1 : 1 5	<p><i>Empirical Finance</i> Chair: Dimitrios Moschos</p>	<p><i>Industrial Organization</i> Chair: Pasquale Sgro</p>	<p><i>FDI</i> Chair: Tomasz Dorozynski</p>	<p><i>Prices and Inflation</i> Chair: Shesadri Banerjee</p>	<p><i>International Economics I</i> Chair: Sushanta Mallick</p>
	<p>Derya Tas, Luc Arrondel, H. Calvo-Pardo</p> <ul style="list-style-type: none"> ▪ Subjective Return Expectations, Information and Stock Market Participation: Evidence from France <p>Y. Emre Ergemen, C. Velasco</p> <ul style="list-style-type: none"> ▪ ML Estimation of Fractionally Integrated Panels with Fixed Effects and Cross-Section Dependence & Applications to Macroeconomic Risk <p>M. El Hedi Arouri, A. Lahiani, Duc Khuong Nguyen</p> <ul style="list-style-type: none"> ▪ World Gold Prices and Stock Returns in China: Insights for Hedging and Diversification Strategies <p>G. Chortareas, G. Magonis, D. Moschos, T. Panagiotidis</p> <ul style="list-style-type: none"> ▪ Financial Development and Growth in the Open Economy: Evidence from Panel Cointegration 	<p>Maria Alipranti, Chrysovalantou Milliou, Emmanuel Petrakis</p> <ul style="list-style-type: none"> ▪ Timing of technology adoption in vertically related industries <p>Muhammad. Ata</p> <ul style="list-style-type: none"> ▪ What makes Public Private Partnerships contracts success or failure? <p>Mohammad Ali Kashefi</p> <ul style="list-style-type: none"> ▪ The Effect of Salvage Market on Strategic Technology Choice and Capacity Investment Decision of Firm under Demand Uncertainty <p>Pasquale Sgro, Xuan Nguyen, Munirul Nabin</p> <ul style="list-style-type: none"> ▪ Licensing under Vertical Product Differentiation: Price vs. Quantity Competition 	<p>Kornecki Lucyna, E. M. Ekanayake</p> <ul style="list-style-type: none"> • State based factors affecting inward FDI employment in the US <p>Xanthippi Adamoglou, Dimitrios Kyrkilis</p> <ul style="list-style-type: none"> • An econometric locational analysis of FDI in an emerging market: evidence from Turkey <p>Adriana Peluffo</p> <ul style="list-style-type: none"> ▪ Foreign Direct Investment, Productivity and Labour Markets: An Analysis for Uruguay <p>Tomasz Dorozynski, Wojciech Urbaniak</p> <ul style="list-style-type: none"> ▪ The Role of Local Government Units in Supporting Foreign Direct Investment. The Case of Lodz Region 	<p>Dikaios Tserkezos</p> <ul style="list-style-type: none"> ▪ Consumer Price Index: Does the Price Collection Frequency Matter? Some Monte Carlo Results <p>Alessandro Calza and Andrea Zaghini</p> <ul style="list-style-type: none"> ▪ Welfare costs of inflation in the euro area <p>İnanç-Tunçer</p> <ul style="list-style-type: none"> ▪ Market Size, Immigration and Prices: Case Study for Istanbul <p>Shesadri Banerjee</p> <ul style="list-style-type: none"> ▪ Inflation Volatility: Experience from Advanced & Developing Economies 	<p>Nazif Durmaz</p> <ul style="list-style-type: none"> ▪ The Exchange Rate, US Cotton Exports, and Cotton Inventories of Asian Textile Producers <p>Florian Verheyen</p> <ul style="list-style-type: none"> ▪ The stability of German export demand equations – have German exports suffered from the strength of the euro? <p>Sushanta Mallick, Helena Marques</p> <ul style="list-style-type: none"> ▪ Selection into exporting and income effects across markets: A comparison of Chinese and Indian exporters' pricing behaviour
11.15 – 11.30 Coffee break					

Friday 15 June 2012 - 11:30 – 13:15 | Parallel Sessions 2

Conference Venue: Koç University (Please see maps at the appendix of the program)

	Room A (CASE B33)	Room B (CASE B34)	Room C (CASE B35)	Room D (CASE B38)	Room E (CASE B39)
11:30 – 13:15	<p><i>Financial Economics I</i> Chair: John Hunter</p>	<p><i>Labor Economics</i> Chair: Ceyhun Elgin</p>	<p><i>Monetary Policy I</i> Chair: Emmanouil Noikokyris</p>	<p><i>Energy Economics</i> Chair: Ashima Goyal</p>	<p><i>Macroeconomics in Emerging Markets</i> Chair: Sanchit Arora</p>
	<p>Georgios Efthymoulou; Priit Vahter</p> <ul style="list-style-type: none"> ▪ Innovative Performance and Financial Constraints: Firm-level evidence from European countries <p>Tugba Bas, Yaz Gulnur Muradoglu, Kate Phylaktis</p> <ul style="list-style-type: none"> ▪ Capital Structures around the world: Are small firms different? <p>Poonam Mehra</p> <ul style="list-style-type: none"> ▪ Competition or Comparative Advantage: What Determines Mergers and Acquisitions? <p>John Hunter, Feng Wu</p> <ul style="list-style-type: none"> ▪ Multifactor consumption based asset pricing models using the US stock market as a reference: evidence from a panel of developed economies 	<p>Shvets Iryna</p> <ul style="list-style-type: none"> • The influence of regional/sectoral dissimilarities on differences in labor productivity and wage in Ukraine <p>Leyla Baştav</p> <ul style="list-style-type: none"> ▪ Hysterisis and US laour market s(1990-2012) <p>Sadullah Çelik</p> <ul style="list-style-type: none"> ▪ Gender Difference in Consumer Attitudes in Turkey: An Investigation during the Recent Global Crisis with Focus on the Age Effect <p>Ceyhun Elgin, Emekcan Yucel</p> <ul style="list-style-type: none"> ▪ Determinants of Preference for Leisure 	<p>Marcelo Sanchez</p> <ul style="list-style-type: none"> ▪ On the limits of transparency: The role of imperfect central bank knowledge <p>Hamza Bennani</p> <ul style="list-style-type: none"> ▪ Do ECB policy-makers' statements reveal dissent? <p>Vaggelis Arvanitis, Stephanos Papadamou</p> <ul style="list-style-type: none"> ▪ The effect of Market-Based Monetary Policy Transparency Index on Inflation and Output variability <p>Georgios Chortareas and Emmanouil Noikokyris</p> <ul style="list-style-type: none"> ▪ Does the MPC Framework Make a Difference? 	<p>Franz Hubert, Onur Cobanli</p> <ul style="list-style-type: none"> ▪ Pipeline Power <p>Joscha Beckmann, Robert Czudaj</p> <ul style="list-style-type: none"> ▪ Oil price and U.S. dollar exchange rates dynamics <p>Ashima Goyal and Shruti Tripathi</p> <ul style="list-style-type: none"> ▪ Regulations and price discovery: oil spot and futures markets 	<p>KN Murty</p> <ul style="list-style-type: none"> ▪ Stochastic simulations using a macro econometric model for India <p>R. M. Sousa, G. Maria Caporale</p> <ul style="list-style-type: none"> ▪ Consumption, Wealth, Stock and Housing Returns: Evidence from Emerging Markets <p>Sibel Bali Eryigit, Kadir Eryigit F. Gaygusuz, E. Dulgeroglou</p> <ul style="list-style-type: none"> • Local Financial Development and Capital Accumulations: Evidence from Turkey <p>Sanchit Arora</p> <ul style="list-style-type: none"> ▪ Regime Switching Monetary and Fiscal Policy Rules and Interaction there-in: An Indian case study
<p>13:15 – 14:30 Lunch Student Center Cafeteria Koç University</p>					

Friday 15 June 2012 - 14:30 – 16:30 | Parallel Sessions 3

Conference Venue: Koç University (Please see maps at the appendix of the program)

	Room A (CASE B33)	Room B (CASE B34)	Room C (CASE B35)	Room D (CASE B38)	Room E (CASE B39)
	<p><i>Financial Markets I</i> Chair: Sanjay Banerji</p>	<p><i>Exchange Rate Economics</i> Chair: Vaclav Zdarek</p>	<p><i>Globalization, Income Inequality and Migration</i> Chair: Anna Soci</p>	<p><i>Macroeconomics, Growth, and Convergence</i> Chair: Chris Tsoukis</p>	<p><i>Political Economy</i> Chair: Bilin Neyapti</p>
14.30 – 16.30	<p>Sule Alan and Thomas Crossley</p> <ul style="list-style-type: none"> ▪ Who Defaults in Subprime Consumer Credit Markets? <p>Stella Spilioti</p> <ul style="list-style-type: none"> ▪ The Macroeconomic factors that affect the Variability between Predicted and Real stock prices <p>Huseyin Ozturk</p> <ul style="list-style-type: none"> • Sovereign credit ratings: Do they tell different from what markets do? <p>Sanjay Banerji, Alexia Ventouri, Zilong Wang</p> <ul style="list-style-type: none"> ▪ The sovereign spread in Asian emerging economies: The Significance of External versus Internal Factors 	<p>Faek Menl Ali, John Hunter</p> <ul style="list-style-type: none"> ▪ The Monetary Approach of the US Dollar- Japanese Yen Exchange Rate: An Empirical Investigation <p>Abdul Aleem, Amine Lahiani</p> <ul style="list-style-type: none"> ▪ Monetary Policy Credibility and Exchange Rate Pass-Through: Some evidence from Emerging Countries <p>Vaclav Zdarek</p> <ul style="list-style-type: none"> ▪ Relative PPP Hypothesis in European Transition Countries -- Has the Financial Crisis Changed the weak link? 	<p>Argiro Moudatsou, Asteriou Dimitrios, Dimeli Sofia</p> <ul style="list-style-type: none"> ▪ Globalization and Income Inequality: A Panel Data Econometric Approach for the EU27 Countries <p>Shimada Akria</p> <ul style="list-style-type: none"> ▪ Migration Possibilities, Education, and Human Capital Formation <p>Boukhatem Jamel, Mokrani Bochra</p> <ul style="list-style-type: none"> ▪ Financial development and poverty: econometric assessment of the direct effect on a panel of lower and middle income countries <p>Anna Soci</p> <ul style="list-style-type: none"> ▪ Income inequality and democracy: the UK case in the last thirty years 	<p>Tsanana E., Katrakilidis C., Fousekis Panayiotis</p> <ul style="list-style-type: none"> ▪ Do CEE economies converge to EU? New evidence using non stationary panel unit root tests. <p>Andrea Imperia</p> <ul style="list-style-type: none"> • Some critical observations on “unemployment, growth and taxation in industrial countries” by F. Daveri and G.Tabellini <p>Christopher Tsoukis</p> <ul style="list-style-type: none"> ▪ Status, hyperbolic discounting, growth, and distribution 	<p>Jose A. Garcia-Martinez</p> <ul style="list-style-type: none"> ▪ An Unexpected Role of Local Selectivity in Social Promotion <p>G. Chortareas, Vassilis Logothetis, Andreas Papandreou</p> <ul style="list-style-type: none"> ▪ Electoral Cycles and Product Market Regulation <p>Yavuz Arasil, Bilin Neyapti</p> <ul style="list-style-type: none"> ▪ A Political Economy Model of Institutional Evolution
<p>16.45 Busses will depart for the city center</p>					

Saturday 16 June 2012 - 9:30 – 11:15 | Parallel Sessions 4

Conference Venue: Koç University (Please see maps at the appendix of the program)

	Room A (CASE B33)	Room B (CASE B34)	Room C (CASE B35)	Room D (CASE B38)	Room E (CASE B39)
	<i>Financial Economics II</i> Chair: Jesus G. Garza-Garcia	<i>International Economics II</i> Chair: Xiaopeng Yin	<i>FDI and Multinationals</i> Chair: Mohamed Saadi	<i>Monetary Policy II</i> Chair: S. Papadamou	<i>R&D</i> Chair: Usha Nair-Reichert
9 : 3 0 – 1 1 : 1 5	<p>Helmut Wagner, Eva Matanovic</p> <ul style="list-style-type: none"> ▪ Derivatives Trading and Financial Market Stability – Analysing the Volatility Impact of DAX Stock Index Futures Trading Using GARCH <p>Dimitris Kenourgios</p> <ul style="list-style-type: none"> ▪ Global Financial Crisis and the Real Economy: A Regional Approach of Financial Contagion <p>Erdem Kılıç, Veysel Ulusoy</p> <ul style="list-style-type: none"> ▪ Evaluation of International Transmission Processes: Financial Contagion <p>Jesus G. Garza-Garcia, Raul Fernandez</p> <ul style="list-style-type: none"> ▪ The Relationship between Bank Competition and Financial Stability: A Case Study of the Mexican Banking Industry 	<p>Dimitrios Sideris</p> <ul style="list-style-type: none"> ▪ The Western Balkans on the road to the EU: An assessment of their integration with the euro zone using the Generalized Purchasing Power Parity approach <p>Laura Povoledo</p> <ul style="list-style-type: none"> ▪ The Allocation of Labour Between the Tradeable and Nontradeable Sectors: Does It Matter for International Business Cycle Models? <p>Marie Stack; Eric Pentecost</p> <ul style="list-style-type: none"> ▪ Regional Integration and Trade: Controlling for Endogeneity in the Gravity Model <p>Xiaopeng Yin</p> <ul style="list-style-type: none"> ▪ Two-way FDI and International Products Cycles: The Case of China's Automobile Industry 	<p>Anastasia Anglelopoulou</p> <ul style="list-style-type: none"> • Host countries' characteristics and MNC'S choice of expansion mode <p>Kanungo Anil Kumar</p> <ul style="list-style-type: none"> ▪ Internationalization of Indian Firms: Overseas Investment A Key Strategy <p>Huseyin Ozturk</p> <ul style="list-style-type: none"> ▪ Foreign Direct Investment and Private Sector External Financing: Do Credit Ratings Matter? <p>Mohamed Saadi</p> <ul style="list-style-type: none"> ▪ Generalized Ricardian growth bottlenecks and outward FDI New evidence on the emerging multinationals 	<p>Petre Caraiani</p> <ul style="list-style-type: none"> ▪ Does money help forecasting macroeconomic dynamics in emerging European Economies? <p>Theodore Panagiotidis, Theologos Dergiades</p> <ul style="list-style-type: none"> ▪ Does Inflation Target matter? Evidence from a change in persistence test <p>Anna Sznajderska</p> <ul style="list-style-type: none"> ▪ Asymmetric effects in the Polish monetary policy rule <p>Stephanos Papadamou, Moïse Sidiropoulos, Eleftherios Spyromitros</p> <ul style="list-style-type: none"> ▪ Does Central Bank Independence Affect Public Debt? 	<p>Ayşegül Eruygur, Erkan Erdil, Seyit Mümin Cilasun</p> <ul style="list-style-type: none"> ▪ Do R&D Expenditures Matter for Labor Productivity in OECD Countries? An Unresolved Question <p>Monica Pop Silaghi, Cristina Jude, A. Diana, Cristian Litan</p> <ul style="list-style-type: none"> ▪ Does research and development business and public contribute to economic growth in Central and Eastern European Countries? A dynamic panel estimation <p>Sahbi Gabsi, Ali Chkir</p> <ul style="list-style-type: none"> • R&D Spillovers, Institutions and growth: Empirical Validation for the case of the developing countries <p>Usha Nair-Reichert, Gowri Thampi</p> <ul style="list-style-type: none"> ▪ Global R&D Partnerships: An Empirical Analysis
11:15 – 11:30 Coffee break					

Saturday 16 June 2012 - 11:30 – 13:15 | Parallel Sessions 5

Conference Venue: Koç University (Please see maps at the appendix of the program)

	Room A (CASE B33)	Room B (CASE B34)	Room C (CASE B35)	Room D (CASE B38)	Room E (CASE B39)
11:30 – 13:15	<p><i>Financial Econometrics</i> Chair: Robert Czudaj</p>	<p><i>Economic Development</i> Chair: Helmut Wagner</p>	<p><i>Monetary Policy Transmission</i> Chair: Kosta Josifidis</p>	<p><i>Fiscal Policy</i> Chair: Vitor Castro</p>	<p><i>Topics in Economics I</i> Chair: Eren Inci</p>
	<p>Dionisis Th. Philippas and Costas Siriopoulos</p> <ul style="list-style-type: none"> ▪ The Effect of Time-varying Information Entropy on Market Uncertainty <p>Mohamed El Hedi Arouri, Amine Lahiani and Duc Khuong Nguyen</p> <ul style="list-style-type: none"> ▪ World Gold Prices and Stock Returns in China: Insights for Hedging and Diversification Strategies <p>Joscha Beckmann and Robert Czudaj</p> <ul style="list-style-type: none"> ▪ Does gold act as a hedge or a safe haven for stocks? A smooth transition approach 	<p>Aysegul Kayaoglu</p> <ul style="list-style-type: none"> ▪ Urbanization, Education and the Growth Backlog of Africa <p>Lukanima, Benedicto K. and Swaray, Raymond</p> <ul style="list-style-type: none"> ▪ An analysis of coffee producer price transmissions following market reforms in the East African Community <p>Olanrewaju Adewole A. and Hasan Bulent Kantarcı</p> <ul style="list-style-type: none"> ▪ The regional development agencies and economic activity <p>Helmut Wagner</p> <ul style="list-style-type: none"> ▪ Structural Change Patterns and Development: China in Comparison 	<p>Yannis Panagopoulos and Aristotelis Spiliotis</p> <ul style="list-style-type: none"> ▪ Assessing interest rate PT and the monetary policy transmission channel: Evidence from the G7 using hidden co-integration technique <p>J. Beckmann, A. Belke and F. Verheyen</p> <ul style="list-style-type: none"> ▪ Interest Rate Pass-Through in the EMU – New Evidence from Nonlinear Cointegration Techniques for Fully Harmonized Data <p>Ekin Ayşe Özşuca and Elif Akbostancı</p> <ul style="list-style-type: none"> ▪ An Empirical Analysis of the Bank Lending Channel in Turkey <p>Kosta Josifidis, Jean-Pierre Allegret, Celine Gimet, and Emilija Beker Pucar</p> <ul style="list-style-type: none"> ▪ External Shock Transmission in Selected European Emerging Countries 	<p>Daniela Federici and Laura Sabani¹</p> <ul style="list-style-type: none"> ▪ Hard and Soft law in the Stability and Growth Pact Reform <p>Francesco Molteni</p> <ul style="list-style-type: none"> ▪ Discretionary versus automatic public expenditure <p>K. Bhattarai and S. Mallick</p> <ul style="list-style-type: none"> ▪ Macroeconomic Policy Coordination Game <p>Vitor Castro, Luca Agnello and Ricardo M. Sousa</p> <ul style="list-style-type: none"> ▪ On the Length of Fiscal Consolidations: Evidence from the past and lessons for the future 	<p>Lili Yan Ing</p> <ul style="list-style-type: none"> ▪ Investment Climate: Expand or Exit from Business? <p>Alexandrou G., A. Vasiliadis, D. Filis, S. Valiotis & E. Koumanakos</p> <ul style="list-style-type: none"> ▪ Survey on the views of SMEs for IFRS in four countries <p>J. Vanneste and Ying Zhang</p> <ul style="list-style-type: none"> ▪ The Impact of Government Expenditure on Prepayment for Health Services: Evidence from Cointegration Analysis in Heterogeneous Panel Data <p>George Agiomirgianakis and George Sfakianakis</p> <ul style="list-style-type: none"> ▪ Determinants of tourism demand in Greece: a panel data approach <p>Eren Inci, Richard Arnott and John Rowse</p> <ul style="list-style-type: none"> ▪ Downtown Parking and Traffic Congestion A Diagrammatic Exposition
<p>13:15 – 14:15 Lunch Student Center Cafeteria Koç University</p>					

Saturday 16 June 2012 - 14:15 – 16:00 | Parallel Sessions 6

Conference Venue: Koç University
(Please see maps at the appendix of the program)

	Room A (CASE B33)	Room B (CASE B34)	Room C (CASE B35)	Room D (CASE B38)	Room E (CASE B39)
	<p>Banking Chair: Nazanin Shirzadi</p>	<p>International Finance and the European Crisis Chair: Ansgar Belke</p>	<p>Special session 'Growing Income Inequality' Chair: Joel Hellier</p>	<p>Financial Markets II Chair: Duc Khuong Nguyen</p>	<p>Topics in Economics II Chair: Lili Yan Ing</p>
14:15 – 16:00	<p>Fazelina Sahul Hamid</p> <ul style="list-style-type: none"> ▪ Dynamic Depositor Discipline: Evidence from East Asian Banks <p>Abid Hameed</p> <ul style="list-style-type: none"> ▪ Interest Rate Sensitivity of Bank Deposits in Pakistan <p>M. J. Mbieleu Nono Mbiakoup, R. Shambare, and P. Ebewo</p> <ul style="list-style-type: none"> ▪ Internet Banking Adoption in South Africa: An Exploration Study <p>S. Fotopoulos, H. Papapanagos and F. Siokis</p> <ul style="list-style-type: none"> ▪ The Determinants of Foreign Bank Expansion: Eclectic vs. Internationalization Theory in Southeastern Europe <p>Nazanin Shirzadi</p> <ul style="list-style-type: none"> ▪ Bank-Specific, Industry-Specific and Macroeconomic Determinants of Bank Profitability: Evidence From Asian Countries 	<p>Keith Pilbeam</p> <ul style="list-style-type: none"> ▪ An evaluation of the management of the Eurozone crisis and the proposals put forward to it. <p>Nikolina Kosteletou</p> <ul style="list-style-type: none"> ▪ Euro and the Competitiveness Debate: Implications for Greece <p>Lewis W. Gaul and Pinar Uysal</p> <ul style="list-style-type: none"> ▪ Can Equity Volatility Explain the Global Loan Pricing Puzzle? <p>Joscha Beckmann, Ansgar Belke and Robert Czudaj</p> <ul style="list-style-type: none"> ▪ The impact of global liquidity on commodity prices – Evidence from a Markov-switching vector error correction model 	<p>Hellier Joël</p> <ul style="list-style-type: none"> ▪ The North-South HOS Model, Inequality and Globalization <p>Chusseau Nathalie</p> <ul style="list-style-type: none"> ▪ Education, Intergenerational Mobility and Inequality 	<p>Robert Czudaj and Joscha Beckmann</p> <ul style="list-style-type: none"> ▪ The price discovery function of agricultural commodities - Evidence from smooth transition regressions <p>Sana Azzabi</p> <ul style="list-style-type: none"> ▪ Finance, Growth and Threshold Effects in Developing and Emerging Countries <p>K. Anas and Ben Othman Hakim</p> <ul style="list-style-type: none"> ▪ A study of the relationship between IFRS adoption strategies and theories of economic development and its effects on the development of MENA's emerging stock markets <p>M. El Hédi Arouri, A. Lahiani, S. Hammoudeh and Duc Khuong Nguyen</p> <ul style="list-style-type: none"> ▪ On the Short- and Long-run Efficiency of Precious Metal Markets 	<p>Ibrahim Mosaad Elatroush</p> <ul style="list-style-type: none"> ▪ Efficiency Estimates for Textiles and Apparel Industry: Stochastic Frontier Analysis Approach <p>Fotini Voulgaris, Eleni Tzagkourni, and Christos Lemonakis</p> <ul style="list-style-type: none"> ▪ Determinants of firm competitiveness in the Greek manufacture <p>Sanju Adhikary</p> <ul style="list-style-type: none"> ▪ Financial Performance and Outreach: Microfinance Institutions in South Asia <p>Evangelia Desli</p> <ul style="list-style-type: none"> ▪ Technical Efficiency and Aggregation Bias <p>Lili Yan Ing, and Gonzalo Varela</p> <ul style="list-style-type: none"> ▪ Constraints on Productivity and Investment in Indonesia's Manufacturing Sector

Saturday 16 June 2012 - 16:15 – 17:15

16.15 – 17.15

Plenary session: Founders Hall, Koç University

Keynote Speaker: **Professor Laurence M. Ball, Johns Hopkins University and NBER**

Title of speech: **“Fiscal Consolidations”**

17:30 Busses will depart for the city center

20:00 Dinner
Çiçek Pasajı/Nevizade
Taksim Square Istanbul

Sunday 17 June 2012

9 : 0 0 - 1 6 : 0 0 O p t i o n a l E x c u r s i o n

Istanbul Classic Tour
Full Day Tour (09:00-16:00) or Half Day Tour (09:00-12:30)

This tour in the old city of Istanbul includes a visit at:

- ***Topkapi Palace (full day tour only)***
- ***St. Sophia (Ayasofya/Hagia Sophia)***
- ***Basilica Cistern***
- ***Hippodrome***
- ***Blue Mosque***

Please contact istanbulreservations@gmail.com. Your emails will be answered by an EEFS representative who will liaise with the travel office to ensure that your request will be expedited efficiently.

Please note that the excursion is optional and it is organized by a private travel agency (ELITSOY TURIZM ORG. DAN. LTD. ŞTI., Sentosa Tour, Batı Mah. Seyit Burhan Toprak Cad. No:10/4, Pendik/İstanbul).

For General Contact Information, Road Map to the campus (Rumelifeneri Campus), regular shuttle and bus schedule (not the one organized by the EEFS), please see the website:

<http://www.ku.edu.tr/en/navigation/contact>

For the webpage of Koç University (in English) please see:

<http://www.ku.edu.tr/en>



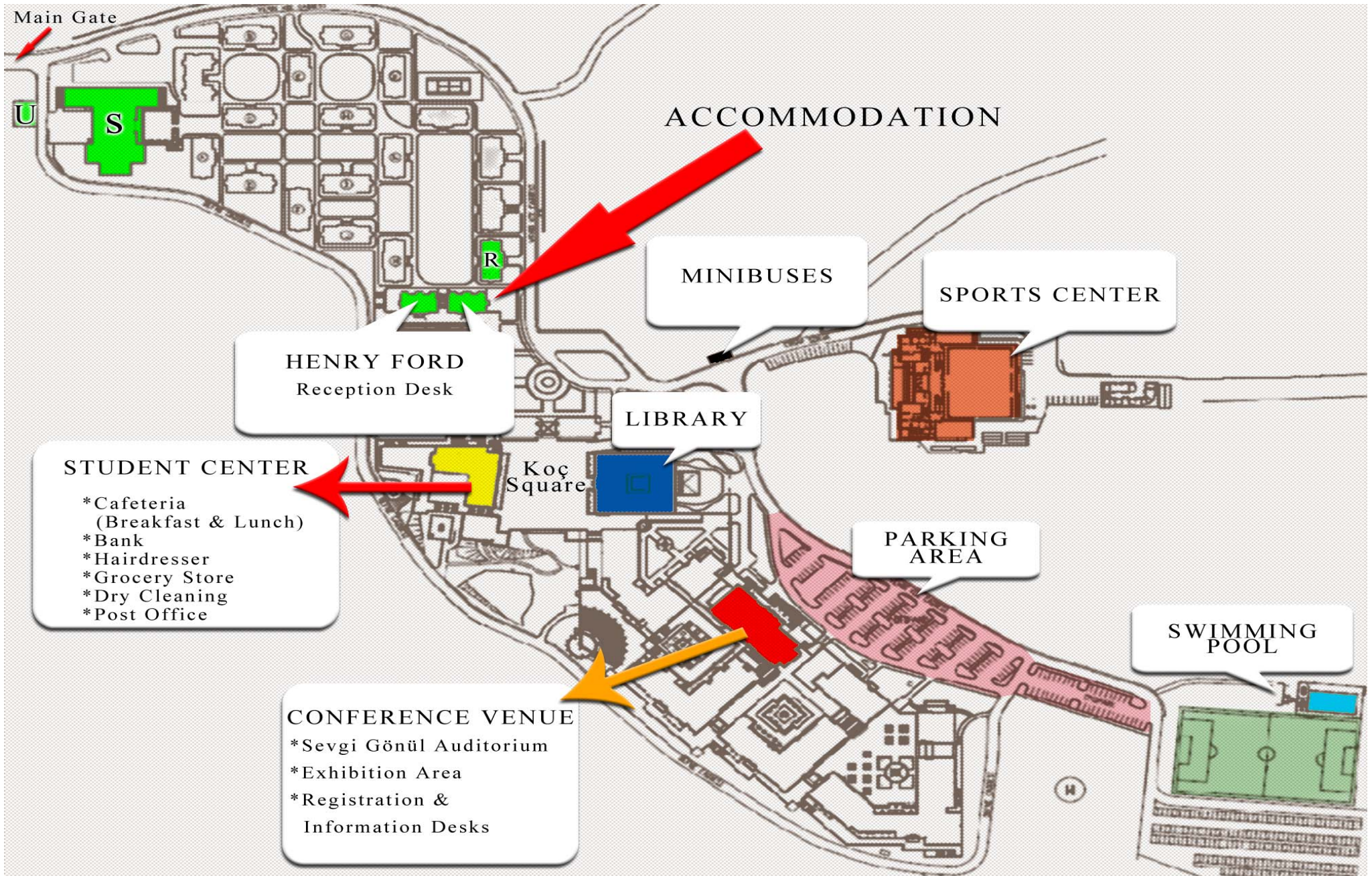
APPENDIX Maps and Directions

European Economics and
Finance Society
Eleventh Annual Conference
Koç University, Istanbul
14th-17th June 2012

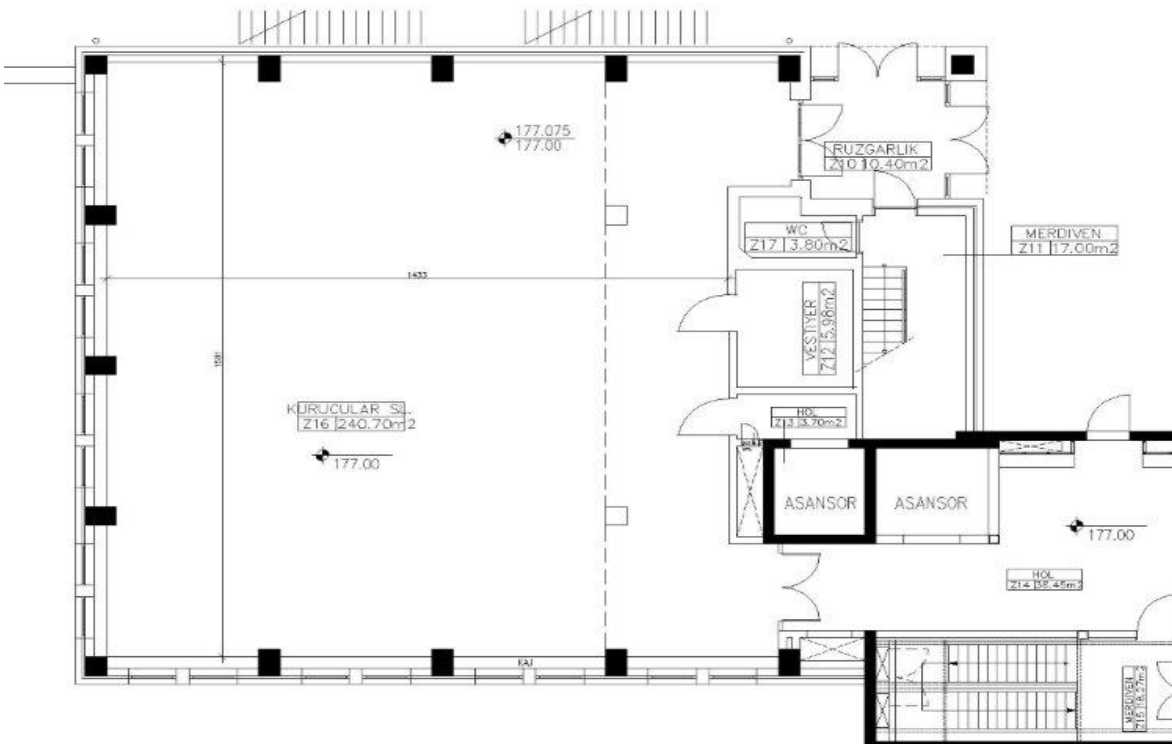


**KOÇ
ÜNİVERSİTESİ**



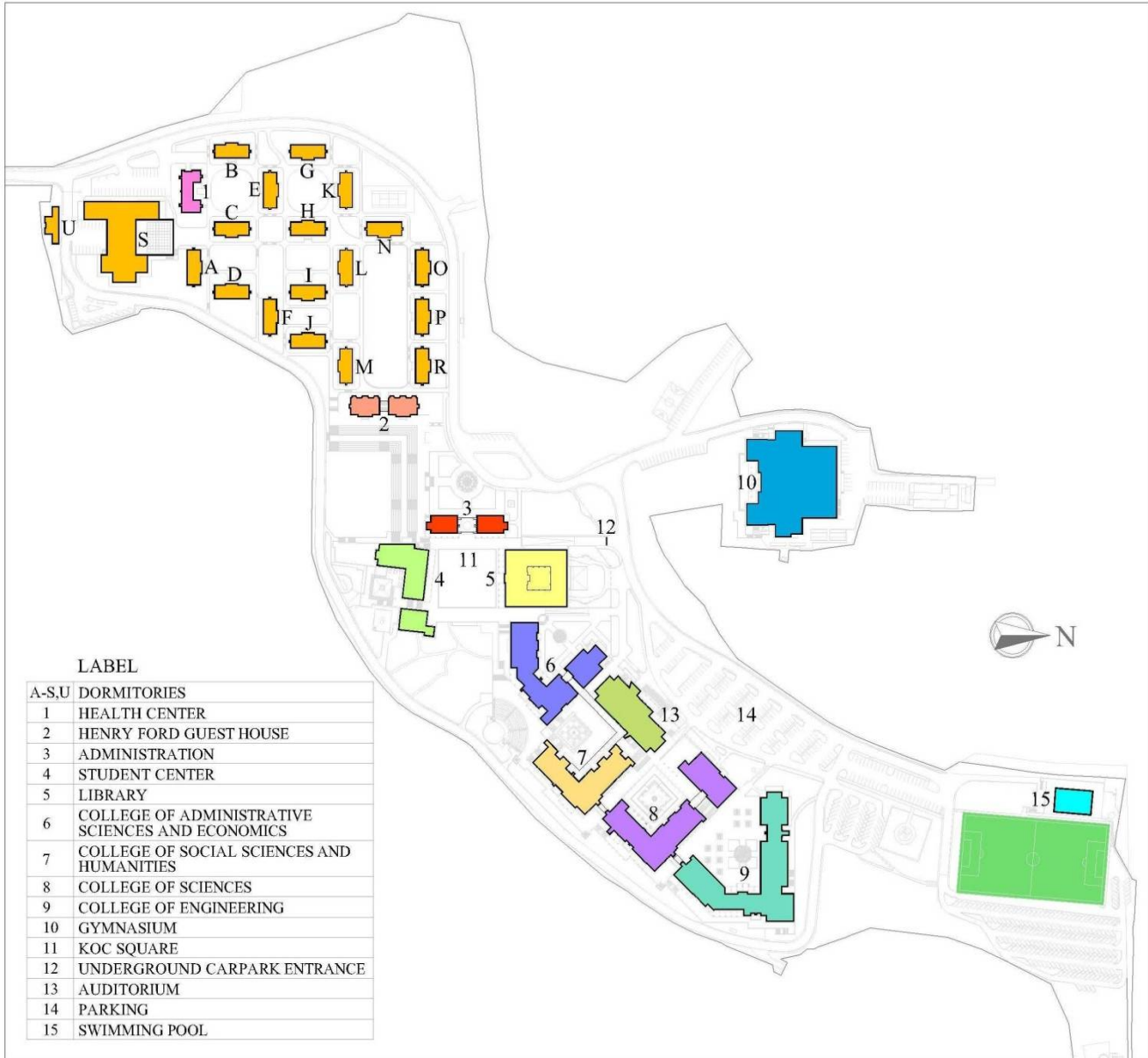


Founder's Hall





KOC UNIVERSITY CAMPUS MAP & URGENT TELEPHONE NUMBERS



SECURITY- FIRE BRIGADE	35 35
DORM MANAGEMENT	33 77
OPERATOR	10 00
HEALTH CENTER	11 00
DOCTOR	12 40
TECHNICAL SERVICES	30 20
RESTAURANT	20 09
BOOKSTORE	1698
MIGROS MARKET	30 40
YAPI KREDI BANK	30 00
COIFFEUR	30 35
POST OFFICE	12 58
MIO CAFE	17 66
PIGASTRO CAFE	37 61
MARTI TAXI	341 11 84
KUMSAL TAXI	218 32 67 – 242 93 57

Authors, Sessions, Rooms

For example, **3D** means: time of Parallel Sessions 3, Room D

1. ABID HAMEED **6A**
2. ADAMOGLU XANTHIPPI **1C**
3. AGIOMIRGIANAKIS GEORGE **5E**
4. AKBOSTANCI ELIF **5C**
5. ALEEM ABDUL **3B**
6. ALEXANDROU GEORGE **5E**
7. ALIPRANTI MARIA **1B**
8. ALLEGRET JEAN-PIERRE **5C**
9. ALOK KUMAR MISHRA
10. ALTUG SUMRU
11. ANGELOPULOU ANASTASIA **4C**
12. ARNOTT RICHARD **5E**
13. ARVANITIS VAGGELIS **2C**
14. ASTERIOU DIMITRIOS **3C**
15. ATA MUHAMMAD **1B**
16. AYŞEGÜL ERUYGUR **4E**
17. BALL LAURENCE
18. BANERJEE SHESADRI **D1**
19. BANERJI SANJAY **3A**
20. BAŞTAV LEYLÄ **2B**
21. BECKMANN JOSCHA **2D, 5A,5C,6B**
22. BEKER PUCAR EMILİJA **5C**
23. BELKE ANSGAR **6B**
24. BEN OTHMAN HAKIM **6D**
25. BENNANI HAMZA **2C**
26. BOUKHATEM JAMEL **3C**
27. CALZA ALESSANDRO **1D**
28. CAPORALE GUGLIELMO MARIA **2E**
29. CARAIANI PETRE **4D**
30. CASTRO VITOR **5D**
31. CEYHUN ELGIN **2B**
32. CHKIR ALI **4E**
33. CHORTAREAS GEORGIOS **1A, 2C, 3E**
34. CHUSSEAU NATHALIE **6C**
35. COBANLI ONUR **2D**
36. CROSSLEY THOMAS **3A**
37. CZUDAJ ROBERT **3B, 5A,6B, 6D**
38. DERGIÄDES THEOLOGOS **4D**
39. DERYA TAS **1A**
40. DESLI EVANGELIA **6E**
41. ALEXA DIANA **4E**
42. DIMELI SOFIA **3C**
43. DOROZYNSKI TOMASZ **1C**
44. DULGEROGLU ERCAN **2E**
45. DURMAZ NAZIF **1E**
46. EBEWO PATRICK **6A**
47. EFTHYVOULOU GEORGIOS **2A**
48. EKANAYAKE E. **1C**
49. EKIN AYŞE ÖZŞUCA **5C**
50. EMEKCAN YUCEL **2B**
51. ERDIL ERKAN **4E**
52. ERYIGIT KADIR Y. **2E**
53. ERYIGIT SIBEL BALI **2E**
54. FAEK MENL ALI **3B**
55. FEDERICI DANIELA **5D**
56. FENG WU **2A**
57. FILIS DIMITRIOS **5E**
58. FLORIAN VERHEYEN **1E**
59. FOTOPOULOS STEFANOS **6A**
60. FOUSEKIS PANAYIOTIS **3D**
61. FRANZ HUBERT **2D**
62. GARCIA-MARTINEZ JOSE A. **3E**
63. GARZA-GARCIA JESUS **4A**
64. SAHBI GABSI **4E**
65. GAUL LEWIS **6B**
66. GIMET CELINE **5C**
67. GOYAL ASHIMA **2D**
68. GAYGUSUZ FILİZ **2E**
69. HECTOR CALVO-PARDO **1A**
70. HÉDI AROURI MOHAMED EL **1A, 5A, 6D**
71. HELLIER JOEL **6C**
72. HUNTER JOHN **2A, 3B**
73. IMPERIA ANDREA **3D**
74. INCI EREN **5E**
75. ING, LILI YAN **5E, 6E**
76. JACQUES VANNESTE **5E**
77. JOSIFIDIS KOSTA **5C**
78. JUDE CRISTINA **4E**
79. KANTARCI HASAN BULENT **5B**
80. KASHEFI MOHAMMAD ALI **1B**
81. KATRAKILIDIS CONSTANTINOS **3D**
82. KAYAOGU AYSEGUL **5B**
83. KENOURGIOS DIMITRIS **4A**
84. KESHAB BHATTARAI **5D**
85. KILIÇ ERDEM **4A**
86. KORNECKI LUCYNA **1C**
87. KOSENTINI ANAS **6D**
88. KOSTELETU NIKOLINA **6B**
89. KOUMANAKOS EVANGELOS **5E**
90. KUMAR, KANUNGO ANIL **4C**
91. KYRKILIS DIMITRIOS **1C**
92. LAHIANI AMINE **1A, 3B, 5A, 6D**
93. LEMONAKIS CHRISTOS **6E**
94. LITAN CRISTIAN **4E**
95. LOGOTHETIS VASSILIS **3E**
96. LUC ARRONDEL **1A**
97. LUCA AGNELLO **5D**
98. LUKANIMA BENEDICTO **5B**
99. MAGONIS GEORGE **1A**
100. MAGOUTAS ANASTASIOS
101. MALLICK SUSHANTA **1E, 5D**
102. MARQUES HELENA **1E**
103. MATANOVIC EVA **4A**
104. MBIELEU MARC **6A**
105. MILLIOU CHRYSOVALANTOU **1B**
106. MOKRANI BOCHRA **3C**
107. MOLTENI FRANCESCO **5D**
108. MOSAAD ELATROUSH IBRAHİM **6E**
109. MOSCHOS DIMITRIOS **1A**
110. MOUDATSOU ARGIRO **3C**
111. MURTY KN **2E**
112. NAIR-REICHERT USHA **4E**
113. NAZANIN SHIRZADI **6A**
114. NABIN MUNIRUL **1B**
115. NEMLIOGLU İLAYDA
116. NEYAPTI BİLİN **3E**
117. NGUYEN DUC KHUONG **1A, 5A, 6D**
118. NGUYEN XUAN **1B**
119. NOIKOKYRIS EMMANOUIL **2C**
120. OLANREWAJU ADEWOLE A **5B**
121. ÖZTURK HUSEYİN **3A, 4C**
122. PANAGIOTIDIS THEODORE **1A, 4D**
123. PANAGOPOULOS YANNIS **5C**
124. PAPADAMOU STEPHANOS **2C, 4D**

125. PAPANAGOS ANDREAS **3E**
126. PAPANAGOS HARRY **6A**
127. PELUFFO ADRIANA **1C**
128. PENTECOST ERIC **4B**
129. PETRAKIS EMMANUEL **1B**
130. PHILIPPAS DIONISIS **5A**
131. PHYLAKTIS KATE **2A**
132. PILBEAM KEITH **6B**
133. POONAM MEHRA **2A**
134. POVOLEDO LAURA **4B**
135. RAUL FERNANDEZ **4A**
136. ROWSE JOHN **5E**
137. SAADI MOHAMED **4C**
138. SABANI LAURA **5D**
139. SADULLAH ÇELIK **2B**
140. SAHUL HAMID FAZELINA **6A**
141. SANA AZZABI **6D**
142. SANCHEZ MARCELO **2C**
143. SANCHIT ARORA **2E**
144. SANJU ADHIKARY **6E**
145. SEPIDEH AHMADIAN
146. SFAKIANAKIS GEORGE **5E**
147. SGRO PASQUALE **1B**
148. SHAMBARE RICHARD **6A**
149. SHAWKAT HAMMOUDEH **6D**
150. SHIMADA AKRIA **3C**
151. SHRUTI TRIPATHI **2D**
152. SHVETS IRYNA **2B**
153. SIDERIS DIMITRIOS **4B**
154. SIDIROPOULOS MOÏSE **4D**
155. SILAGHI MONICA POP **4E**
156. SIOKIS FOTIOS **6A**
157. SIRIOPOULOS COSTAS **5A**
158. SOCI ANNA **3C**
159. SOUSA RICARDO **2E, 5D**
160. SPILIOTI STELLA **3A**
161. SPILIOTIS ARISTOTELIS **5C**
162. SPYROMITROS ELEFTHERIOS **4D**
163. STACK MARIE **4B**
164. STYLIARAS CONSTANTINOS **1E**
165. SULE ALAN **3A**
166. SWARAY RAYMOND **5B**
167. SZNAJDESKA ANNA **4D**
168. THAMPI GOWRI **4E**
169. TSANANA EFTYCHIA **3D**
170. TSERKEZOS DIKAIOS **1D**
171. TSOUKIS CHRISTOPHER **3D**
172. TUGBA BAS **2A**
173. TUNÇER İNANÇ **1D**
174. TZAGKOURNI ELENI **6E**
175. URBANIAK WOJCIECH **1C**
176. UYSAL PINAR **6B**
177. VAHTER PRIIT **2A**
178. VALIOTIS SPIRIDON **5E**
179. VARELA GONZALO **6E**
180. VASILIADIS ANASTASIOS **5E**
181. VENTOURI ALEXIA **3A**
182. VERHEYEN FLORIAN **1E, 5C**
183. VEYSEL ULUSOY **4A**
184. VOULGARIS FOTINI **6E**
185. WAGNER HELMUT **4A, 5B**
186. WANG ZILONG **3A**
187. YAVUZ ARASIL **3E**
188. YAZ GULNUR MURADOGLU **2A**
189. ZAGHINI ANDREA **1D**
190. ZDAREK VACLAV **3B**
191. ZHANG YING **5E**

